

DSM

CONTRACT
LIFTING
SERVICES



**Maeda MC-305C
Spider Crane**

TECHNICAL INFORMATION

MAEDA MC-305C SPIDER CRANE



The Maeda MC305C spider crane is a powerful and versatile crane, with the Lifting Capacity of 2.93ton X 2.5m and a maximum working Radius 12.16m.

Offering a blend of both power and design, the MAEDA MC305C Spider Crane is in a class of its own.

Outriggers are adjustable from the control station.

QUICK HOOK is installed as standard.

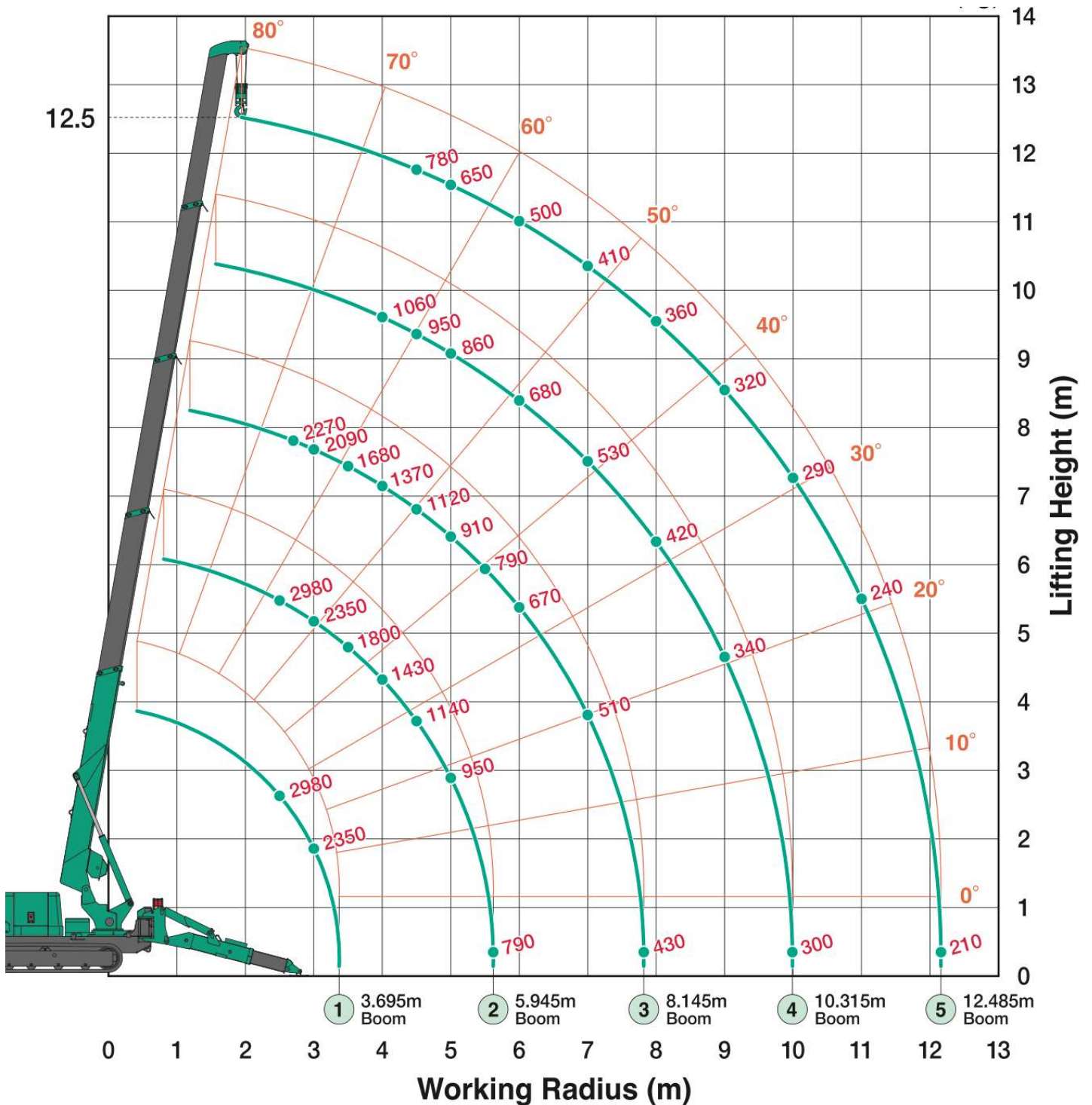
Dual and variable speeds are available. MOMENT LIMITER fitted as standard for CD Specification.

Cable remote controller Separate type is available as option.

MODEL	MC-305CR
CRANE CAPACITY	2.93T @ 2.5M
MAX.WORKING RADIUS	12.16M
MAX.HOOK HEIGHT	APPROX. 12.66M
BOOM	5-Section hydraulically telescoping boom of pentagonal box construction
BOOMLENGTH	3.695 -12.485m
LUFFER SYSTEM	2X Direct Push type Hydraulic Cylinders
SLEWING SYSTEM	360° - continuous, by a hydraulic motor
TRAVELLING SYSTEM	Hydrostatic transmission
TRAVELLING SPEED	Dual & Valuable, 0° 2.2km/h, 0° 3.0km/h
GRADABILITY	23.5°
FUEL/FUELTANK CAPACITY	Diesel / 37L
CONTROL SYSTEM	Levers, and either Cable type or Wireless Radio type remote control
ENGINE	Yanmar diesel engine '3TNE74-MB1' 14kw/2,530min -1
DIMENSIONS (LxWxH)	4.115 x 1.280 x 1.695mm
MACHINE WEIGHT	3,770kg
STANDARD EQUIPMENT	Cable type Remote Controller (R)
OPTIONS	Moment Limiter (M) (CE:Standard) Electric Motor Option (E) White Rubber Tracks One touch couplers for hudraulic hoses Single fall Hook Block Indicator for outriggers' setting (CE:Standard)

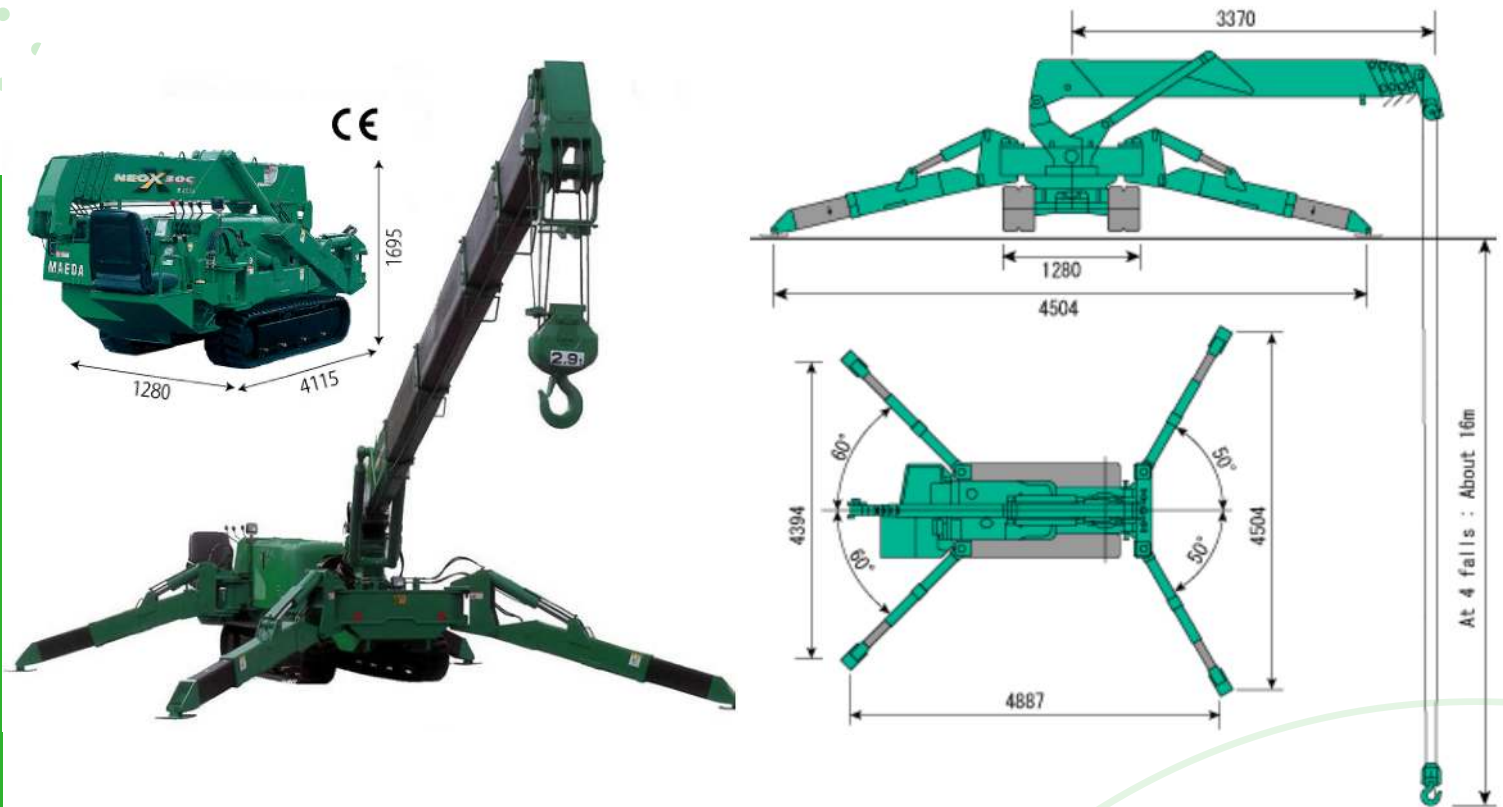
SPECIFICATIONS

MAEDA MC-305C SPIDER CRANE



SPECIFICATIONS

MAEDA MC-305C SPIDER CRANE



TOTAL RATED LOAD (Outriggers @ Maximum position)

5.945m boom		8.145m boom		10.315m boom		12.485m boom	
Working Radius (m)	Total Rated Load (m)	Working Radius (m)	Total Rated Load (kg)	Working Radius (m)	Total Rated Load (kg)	Working Radius (m)	Total Rated Load (kg)
Less than 2.5	2930	2.7	2270	4.0	1060	Less than 4.5	775
3.0	2350	3.0	2090	4.5	950	5.0	640
3.5	1950	3.5	1680	5.0	860	6.0	495
4.0	1670	4.0	1415	6.0	750	7.0	410
4.5	1450	4.5	1230	7.0	645	8.0	360
5.0	1300	5.0	1070	8.0	540	9.0	320
5.62	1120	5.5	950	9.0	490	10.0	290
		6.0	855	9.99	415	11.0	260
		7.0	700			12.16	250
		7.82	610				

The Total Load Rate Table is based on actual working radius that takes into account boom deflections under load. The Total Rated Load Table is including 30KG of Hook Block.



“

**IT'S CONTRACT
LIFTING, WITH
A PROJECT
APPROACH**

”



The Old Rectory, Church Road, Bowers Gifford, Basildon. SS13 2HG

0203 948 9659

contracts@dsmcls.co.uk

www.dsmcls.com